

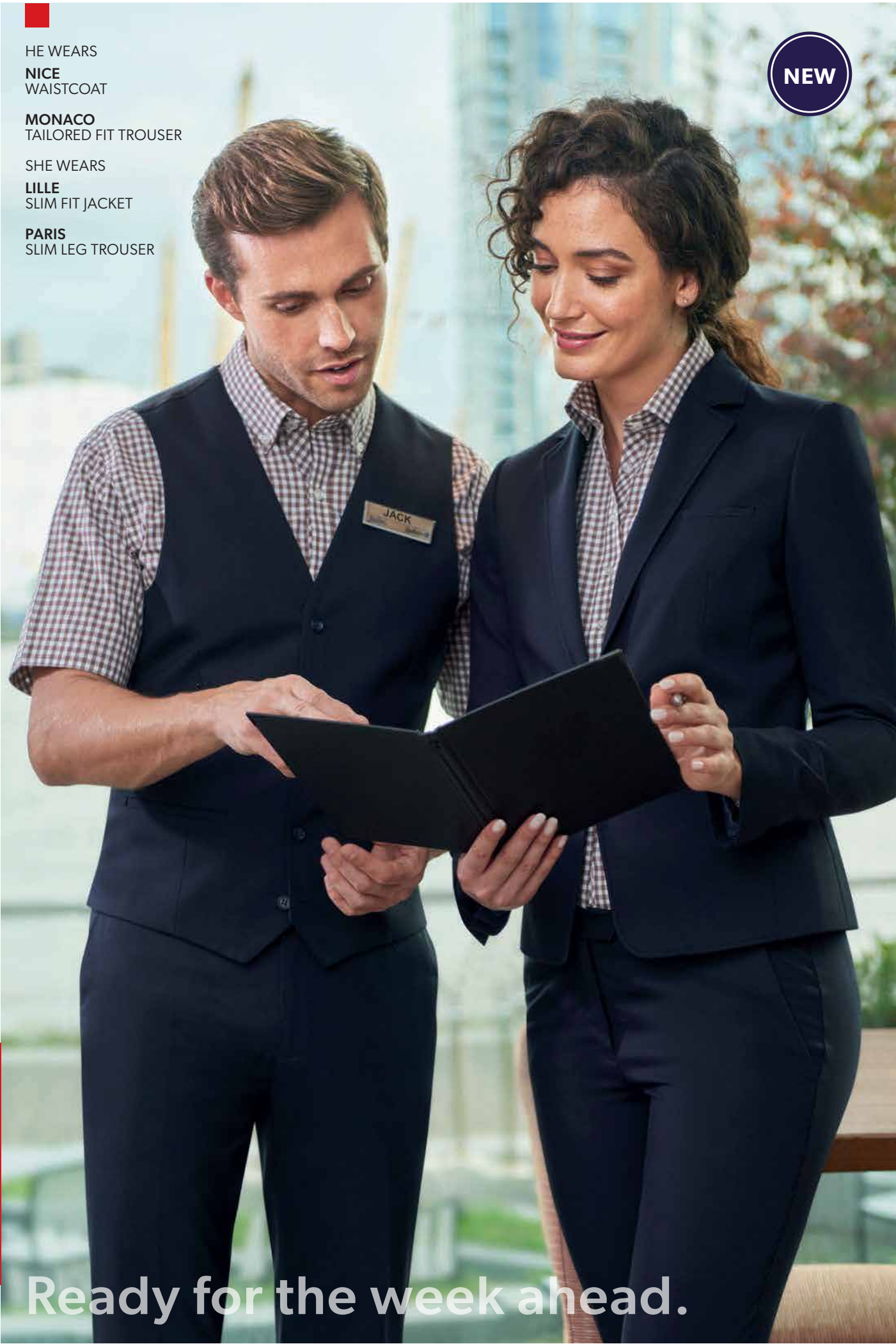
HE WEARS  
**NICE**  
WAISTCOAT

**MONACO**  
TAILORED FIT TROUSER

SHE WEARS  
**LILLE**  
SLIM FIT JACKET

**PARIS**  
SLIM LEG TROUSER

NEW



Ready for the week ahead.

VESTIO  
corporate fashion

VESTIO  
Industrieweg 4B  
2102 LH HEEMSTEDE  
T 023 5841999  
E info@vestio.nl  
W www.vestio.nl

NEW  
STYLES

# TODAY COLLECTION

## EVERY DAY

Highly durable and comfortable stretch fabrics combine with stylish garment designs to provide the same great look and functionality day in, day out. Complete with a women's trouser with a feature jogger waist, our Today Collection offers a practical solution for any active role in the demanding corporate marketplace. 2020 sees the launch of two new women's styles, featuring recycled polyester.

10 Mix & Match Styles	Slim Fit Tailored Fit	Available in 3 colours
 63% Polyester 34% Viscose 3% Lycra	 335gm Midweight Fabric	 40° Machine Washable
 Very Durable - Martindale Test > 90,000 rubs	← 16% → High Level of Stretch	



15 Recycled bottles  
used per suit  
Certain styles

### MEN'S JACKET

DIJON Tailored Fit Jacket 108 - 109

### TROUSER

MONACO Tailored Fit Trousers 111

### WAISTCOAT

NICE Waistcoat 110

### WOMEN'S JACKETS

NEW LILLE Slim Fit Jacket 112 - 113  
CANNES Tailored Fit Jacket 113

### TROUSERS

NEW PARIS Slim Leg Trousers 114  
REIMS Tailored Leg Trousers 115

### WAISTCOAT, SKIRT & DRESS

TOULOUSE Waistcoat 117  
LYON Straight Skirt 117  
BORDEAUX Dress 116

### COLLECTION SUMMARY COLOUR CHOICE AND AFTERCARE

Today Collection & Fabric Information 118 - 121

### PARTICULARLY SUITABLE FOR:



Front of  
house



Retail



Hospitality



Health  
sectors



Education



Facilities  
Management



Security



Transport



**DIJON**  
TAILORED FIT JACKET  
3833C Charcoal



**DIJON**  
TAILORED FIT JACKET  
3833 A,C,D

Sizes:  
38" - 44" short  
34" - 56" regular  
38" - 46" long

Centre back length  
at size 40R = 76cm





1539A Navy



**NICE**  
WAISTCOAT  
1539 A,C,D

**Sizes:**  
XS 34" - 36"  
S 38" - 40"  
M 42" - 44"  
L 46" - 48"  
XL 50" - 52"

Centre back length  
at size M = 63cm



1539D Black

**MONACO**  
TAILORED FIT TROUSER  
8845 A,C,D

**Sizes:**  
28" - 50" waist in leg lengths  
S-29.5", R-31.5", L-33"  
& 36" unfinished

Half hem width at  
waist size 34" = 20cm

**TAILORED FIT**



8845D Black





**LILLE**  
SLIM FIT JACKET  
2348D Black

NEW



15 Recycled bottles  
used per suit



**CANNES**  
TAILORED FIT JACKET  
2326C Charcoal



NEW



**LILLE**  
SLIM FIT JACKET  
2348 A,C,D

Sizes:  
6 - 16 short  
4 - 24 regular  
6 - 16 long

Centre back length  
at size 12R = 55.5cm



15 Recycled bottles  
used per suit



**CANNES**  
TAILORED FIT JACKET  
2326 A,C,D

Sizes:  
8 - 16 short  
4 - 26 regular  
10 - 18 long

Centre back length  
at size 12R = 63cm





2349D Black



SLIM LEG



**PARIS**  
SLIM LEG TROUSER  
2349 A,C,D

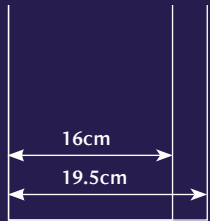
Sizes:  
4 - 24 waist in leg lengths  
S-27", R-29", L-31", XL-33"  
& 36" unfinished

Half hem width at size 12 = 16cm



15 Recycled bottles  
used per suit

2 Trousers hem widths



FASHION STRETCH  
WAISTBAND



2327A Navy

**REIMS**  
TAILORED LEG TROUSER  
WITH FASHION STRETCH  
WAISTBAND  
2327 A,C,D

Sizes:  
4 - 26 waist in leg lengths  
S-27", R-29", L-31", XL-33"  
& 36" unfinished

Half hem width at size 12 = 19.5cm

2327C Charcoal



TAILORED LEG





2347A Navy



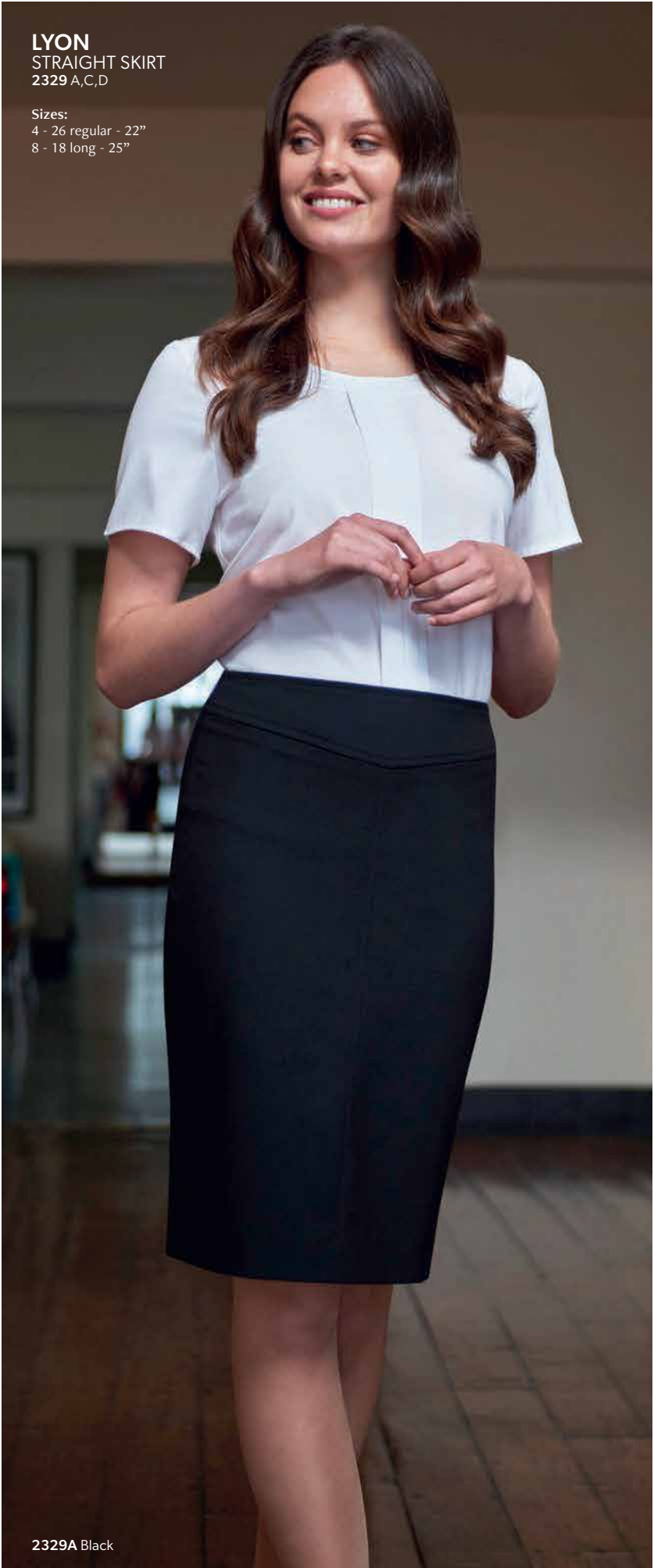
**BORDEAUX**  
DRESS  
2347 A,C,D

Sizes:  
6 - 24 regular  
8 - 20 long

Centre back length  
at size 12R = 97cm

**LYON**  
STRAIGHT SKIRT  
2329 A,C,D

Sizes:  
4 - 26 regular - 22"  
8 - 18 long - 25"



2329A Black

**TOULOUSE**  
WAISTCOAT  
2328 A,C,D

Sizes:  
XS 4 - 6  
S 8 - 10  
M 12 - 14  
L 16 - 18  
XL 20 - 22  
XXL 24 - 26

Centre back length  
at size M = 51.5cm



2328D Black





# WOMEN'S TODAY SUMMARY



**LILLE JACKET**  
SLIM FIT  
Navy

1 button, notch lapel, centre vent, twin outer welt pockets.

**Sizes:**  
6 - 16 short  
4 - 24 regular  
6 - 16 long

**Code & Colours:**  
2348 A / C / D

Centre back length at size 12R = 55.5cm



**PARIS TROUSER**  
SLIM LEG  
Navy

Front hook fastening, 2 side pockets, mock hip pockets.

**Sizes:**  
4 - 24 waist in leg lengths  
S-27", R-29", L-31", XL-33" & 36" unfinished

**Code & Colours:**  
2349 A / C / D

Half hem width at size 12R = 16cm

15 Recycled bottles used per suit

2020 sees the launch of the LILLE jacket and PARIS trouser, the first styles in the Today Collection to use RECYCLED POLYESTER in the fabric blend. As part of our commitment to sustainable sourcing and manufacturing, this simple fabric change diverts 15 BOTTLES PER SUIT from landfill, reducing soil contamination and air & water pollution. What's more, recycled polyester requires less energy in production than virgin polyester. Recycled polyester will be rolled out throughout the entire TODAY COLLECTION during 2020.



**CANNES JACKET**  
TAILORED FIT  
Black

1 button, notch lapel, centre vent, twin outer welt pockets.

**Sizes:**  
8 - 16 short  
4 - 26 regular  
10 - 18 long

**Code & Colours:**  
2326 A / C / D

Centre back length at size 12R = 63cm



**REIMS TROUSER**  
TAILORED LEG  
Charcoal

Front hook fastening, 2 side pockets, mock hip pockets, feature fashion stretch waistband.

**Sizes:**  
4 - 26 waist in leg lengths  
S-27", R-29", L-31", XL-33" & 36" unfinished

**Code & Colours:**  
2327 A / C / D

Half hem width at size 12R = 19.5cm



**TOULOUSE WAISTCOAT**  
Navy

5 button front, 2 welt pockets, lining back adjuster.

**Sizes:**  
XS 4 - 6  
S 8 - 10  
M 12 - 14  
L 16 - 18  
XL 20 - 22  
XXL 24 - 26

**Code & Colours:**  
2328 A / C / D

Centre back length at size M = 51.5cm



**LYON SKIRT**  
Black

Straight skirt, centre vent, front waistband detail.

**Sizes:**  
4 - 26 regular - 22"  
8 - 18 long - 25"

**Code & Colours:**  
2329 A / C / D



**BORDEAUX DRESS**  
Charcoal

Curved neckline, satinstripe seam detail, pleats for ease of movement, princess seams, centre vent, centre back zip, short sleeve.

**Sizes:**  
6 - 24 regular  
8 - 20 long

**Code & Colours:**  
2347 A / C / D

Centre back length at size 12R = 97cm



63% Polyester  
34% Viscose  
3% Lycra



Midweight  
Fabric



Machine  
Washable



Very Durable -  
Martindale Test  
> 90,000 rubs

← 16% →

High Level  
of Stretch



Start the week looking good.



A. Navy

C. Charcoal

D. Black



# MEN'S TODAY SUMMARY



**DIJON JACKET**  
TAILORED FIT  
Navy

2 button jacket, twin side vents, slant pockets, 3 internal pockets.

Sizes:  
38" - 44" short  
34" - 56" regular  
38" - 46" long

Code & Colours:  
3833 A / C / D

Centre back length at size 40R = 76cm



**MONACO TROUSER**  
TAILORED FIT  
Black

Flat front, 2 side pockets, 1 rear pocket.

Sizes:  
28" - 50" waist in leg lengths  
S-29.5", R-31.5", L-33" & 36" unfinished

Code & Colours:  
8845 A / C / D

Half hem width at waist size 34" = 20cm



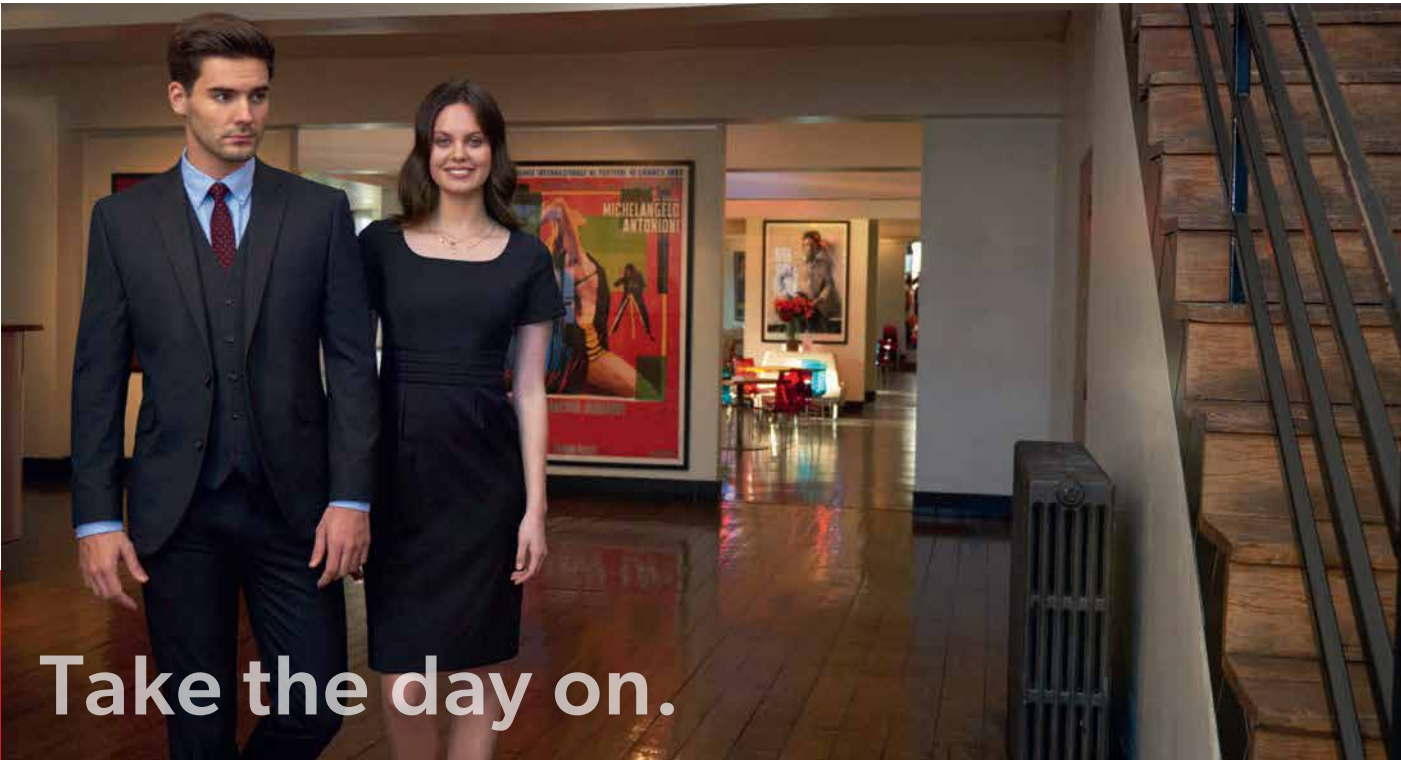
**NICE WAISTCOAT**  
Charcoal

5 button front, lining backed with adjuster, 2 welt pockets.

Sizes:  
XS 34" - 54"  
S 38" - 40"  
M 42" - 44"  
L 46" - 48"  
XL 50" - 52"

Code & Colours:  
1539 A / C / D

Centre back length at size M = 63cm



Take the day on.

## PARTICULARLY SUITABLE FOR:



Front of house



Retail



Hospitality



Health sectors



Education



Facilities Management



Security



Transport

# FABRIC INFORMATION

Our TODAY collection is available in 3 fabric colour choices.



A. Navy

C. Charcoal

D. Black



63% Polyester  
34% Viscose  
3% Lycra



Midweight  
Fabric



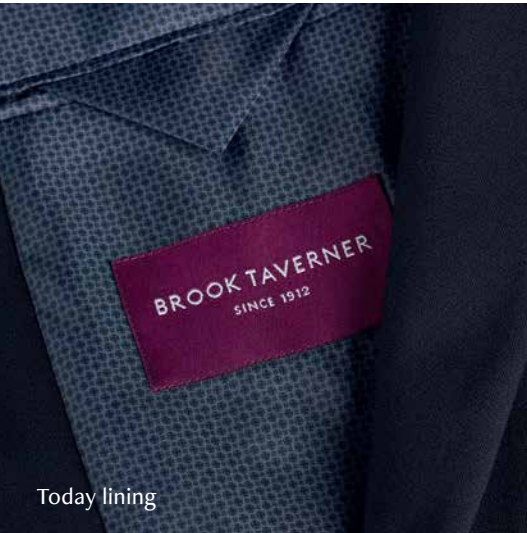
Machine  
Washable



Very Durable -  
Martindale Test  
> 90,000 rubs

← 16% →

High Level  
of Stretch



Today lining

Highly durable and comfortable stretch fabrics combine with stylish garment designs to provide the same great look and functionality day in, day out. Complete with a women's trouser with a feature jogger waist, our Today Collection offers a practical solution for any active role in the demanding corporate marketplace. 2020 sees the launch of two new women's styles, featuring recycled polyester.



15 Recycled bottles  
used per suit  
Certain styles



## WASHCARE INSTRUCTIONS



Wool  
Cycle



Wash  
Separately



Reshape  
garments  
naturally



Do NOT  
tumble dry



Cool iron over  
damp cloth



Alternatively,  
garments can  
be dry cleaned